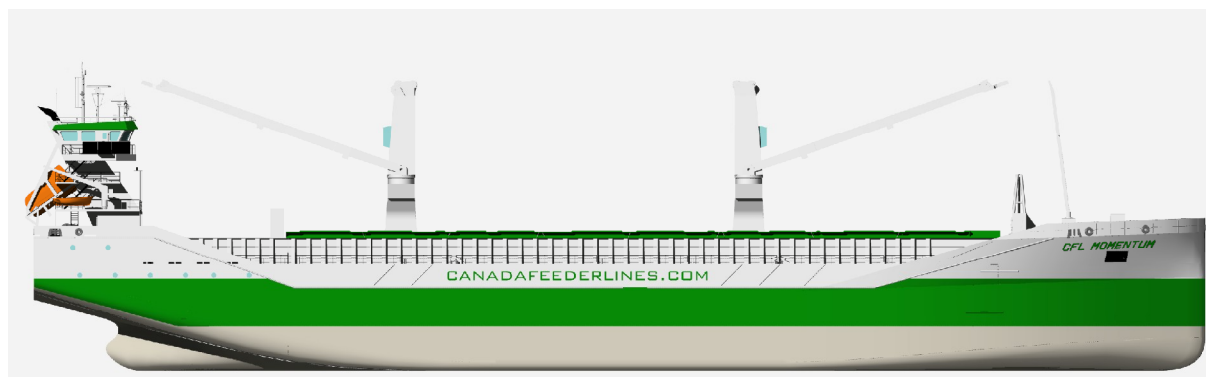


Sole 10000



Sole 10000, a modern design for future requirements of flexible project- and general multi purpose cargoes in the world wide trade.

Cargo characteristics are: gears, one single rectangular hold of 70,5 meters, hatchcovers can all be stored on aftship, movable separation bulkheads / tweendecks, wide deck areas, container fitted.

Sailing characteristics are: modern hull design with optimum balance between speed & consumption & stability. Good seakeeping and speed keeping performance.

Gears:

2 x SWL 40 t at 2,5 - 24 m
2 x SWL 55 t at 3 - 20 m
2 x SWL 80 t at 3 - 14 m

Container intake:

hold abt. 232 TEU
hatches abt. 187 TEU

Hold:

hold length 70.50 m
hold beam 15.20 m
hold height 11.79 m
Total volume 12.358 m3
428.000 cuft
tanktop 18 t/m2

Main particulars:

Length_{oa} abt. 116.26 m
Length_{pp} abt. 112.76 m
Beam_{mld} abt. 17.80 m
Depth abt. 10.50 m
Draft_{mld} abt. 7.90 m
Deadweight abt. 10000 t

GT abt. 6525
NT abt. 3425

Main engine 4000 kW @
600 rpm, speed abt. 14 knots
on abt. 16 t IFO 380cst
(based on 95% MCR)

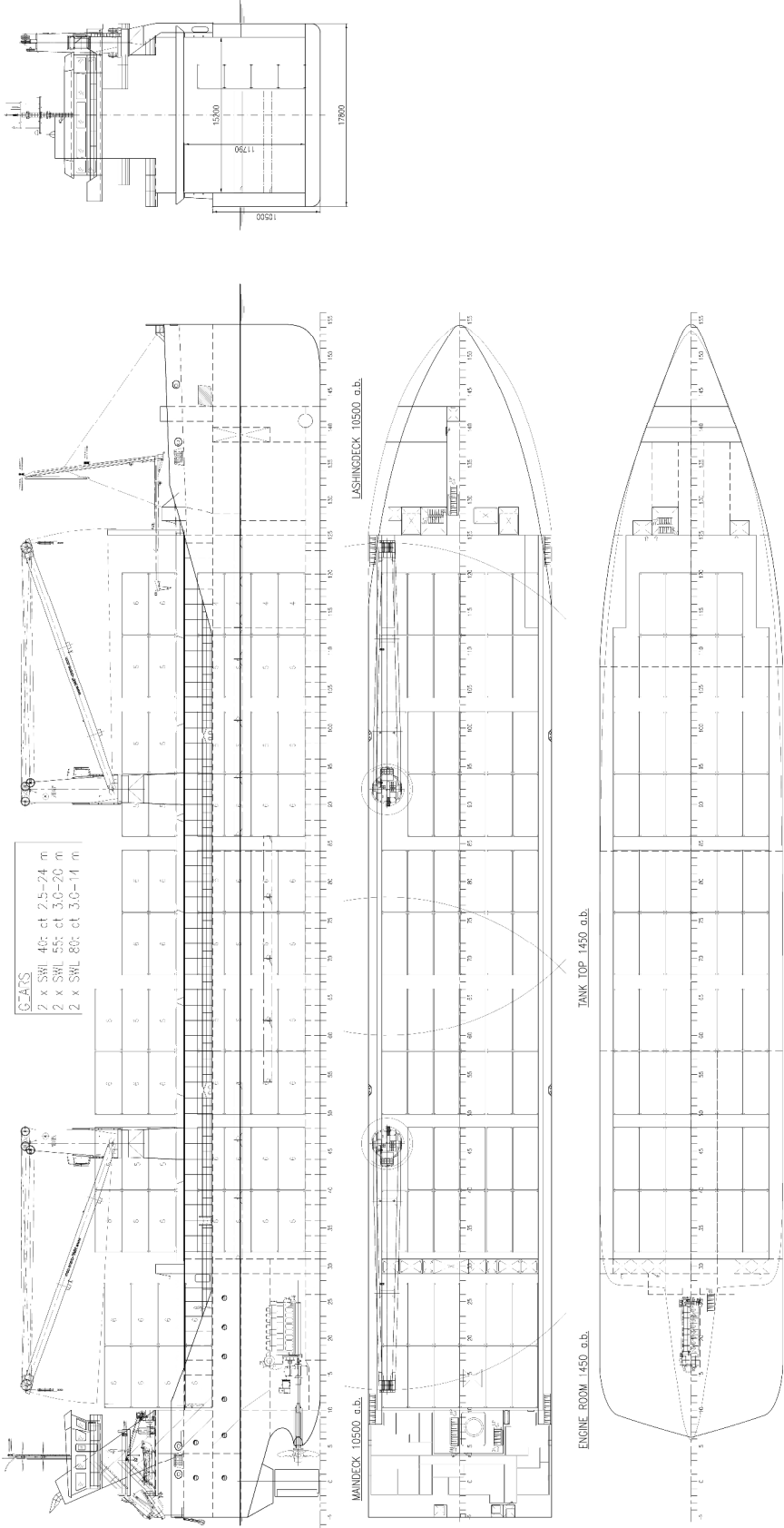


Notice:

Particulars believed to be correct but without guarantee. This information is the property of Peters Shipyards and may not be reproduced or used in part or in whole for any purpose except by written permission of this company.

Rev.L

Sole 10000



Notice: Particulars believed to be correct but without guarantee. This information is the property of Peters Shipyards and may not be reproduced or used in part or in whole for any purpose except by written permission of this company.

Rev.L